

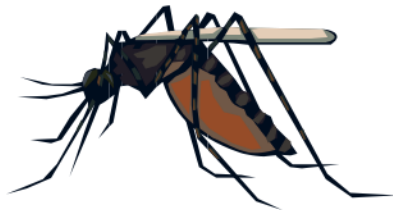
Benny the Bat

Story By: Andrew Frinkle

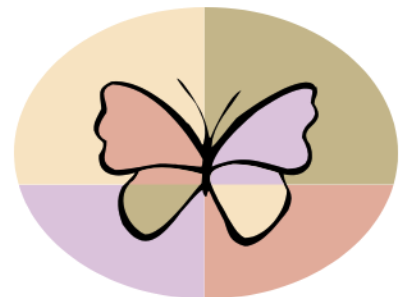
Benny was a Bat. He had wings. He had small eyes. He could not see well, but he could hear very well. This helped him catch his food at night. That was when he was awake.



He liked to eat bugs. He ate moths. He ate mosquitoes. He ate all kinds of flying bugs. He swooped in and got them at night! During the day, he was busy sleeping.



He liked dark places. He liked to sleep in big trees. He really liked to sleep in old barns. He liked places that were dark, dry, and warm. He slept hanging by his feet. He was upside down when he slept. Bats like to sleep that way. They are not like people.



Benny was a fast flier. He flew everywhere. He was not a bird. He was a mammal. He was like a mouse with wings. He didn't have feathers. He had fur. Benny was a Bat!

Benny the Bat

Story By: Andrew Frinkle

Use the information in the story to answer the questions below.

1. What kind of animal is this story mostly about?
 - A. bears
 - B. lions
 - C. bats
 - D. anteaters

2. What kind of bug does the bat like to eat?
 - A. ants
 - B. bees
 - C. flies
 - D. moths

3. Which of these foods does the anteater also like to eat?
 - A. mosquitoes
 - B. termites
 - C. beetles
 - D. ladybugs

4. YES OR NO: Does Benny the Bat have feathers?
 - A. YES
 - B. NO

5. Benny the Bat is *not* a bird. He is a what?
 - A. reptile
 - B. mammal
 - C. bird
 - D. amphibian

Benny the Bat

Story By: Andrew Frinkle

Use the information in the story to answer the questions below.

1. What kind of animal is this story mostly about?
 - A. bears
 - B. lions
 - C. bats**
 - D. anteaters

2. What kind of bug does the bat like to eat?
 - A. ants
 - B. bees
 - C. flies
 - D. moths**

3. Which of these foods does the anteater also like to eat?
 - A. mosquitoes**
 - B. termites
 - C. beetles
 - D. ladybugs

4. YES OR NO: Does Benny the Bat have feathers?
 - A. YES
 - B. NO**

5. Benny the Bat is *not* a bird. He is a what?
 - A. reptile
 - B. mammal**
 - C. bird
 - D. amphibian