

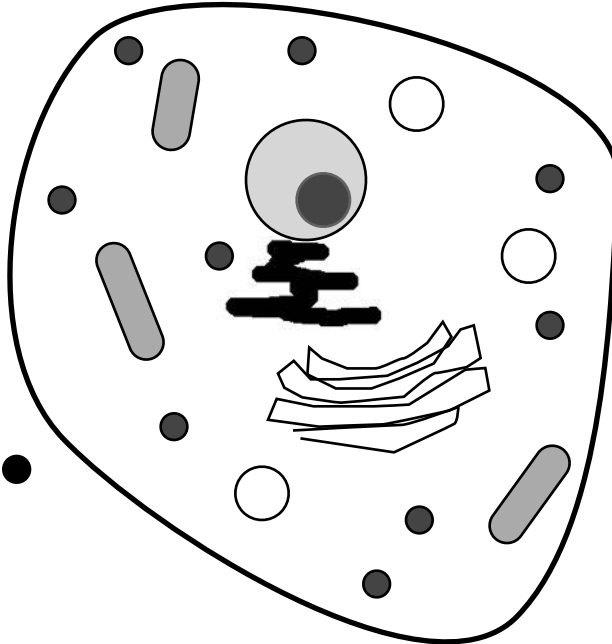
Name: _____

Animal and Plant Cells

Directions: All living things are made of cells. Study the structure of plant and animal cells, then label the diagrams below.

Animal Cell

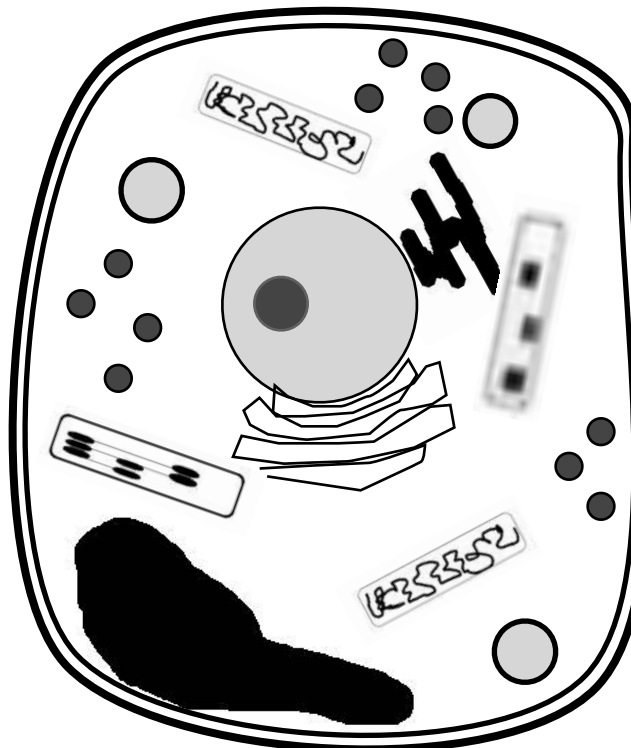
- nucleolus ●
- ribosome ●
- cytoplasm ●
- golgi apparatus ●
- lysosome ●



- ribosome
- endoplasmic reticulum
- cell membrane
- nucleus
- mitochondrion

Plant Cell

- cytoplasm ●
- chloroplast ●
- vacuole ●
- cell wall ●
- golgi body ●



- ribosome
- endoplasmic reticulum
- cell membrane
- nucleus
- mitochondrion
- amyloplast